



# GOES GREEN

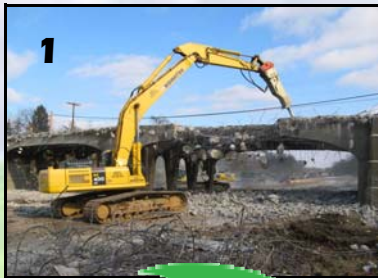


## How does the New I-64 Project contribute to a “greener” St. Louis?

- When the New I-64 project is complete, a total of **456,000 tons** of concrete and asphalt will be recycled.
- Using recycled concrete as the base material for roadways reduces the pollution involved in transporting material to and from a quarry.
- Steel products such as rebar, guardrail, signs and lights are recycled and reused in the production of other metal goods.
- Improved air quality is a result of better interchanges that reduce congestion, including three new roundabouts that eliminate signals which require electricity and reduce emissions because vehicles don't have to stop.
- 3,700 trees** will be replanted along the project.
- Best of all, **no construction materials go into landfills!**

### THE CONCRETE RECYCLING PROCESS

A final layer of concrete is poured and the surface is smoothed (below, the workers are standing on the aggregate base).



A hydraulic drilling machine demolishes bridges into chunks or an excavator breaks roadway up into smaller pieces.



The rubble is loaded into large portable crushers that can crunch up to 600 tons of concrete per hour.



The crushed concrete is then used as an aggregate base that lies beneath the concrete pavement that we drive on.



Rubble goes into the crusher and comes out of a large conveyor that shoots it into a pile.

Questions?  
1-888-ASK-MODOT or [www.thenewi64.org](http://www.thenewi64.org)



May 2009